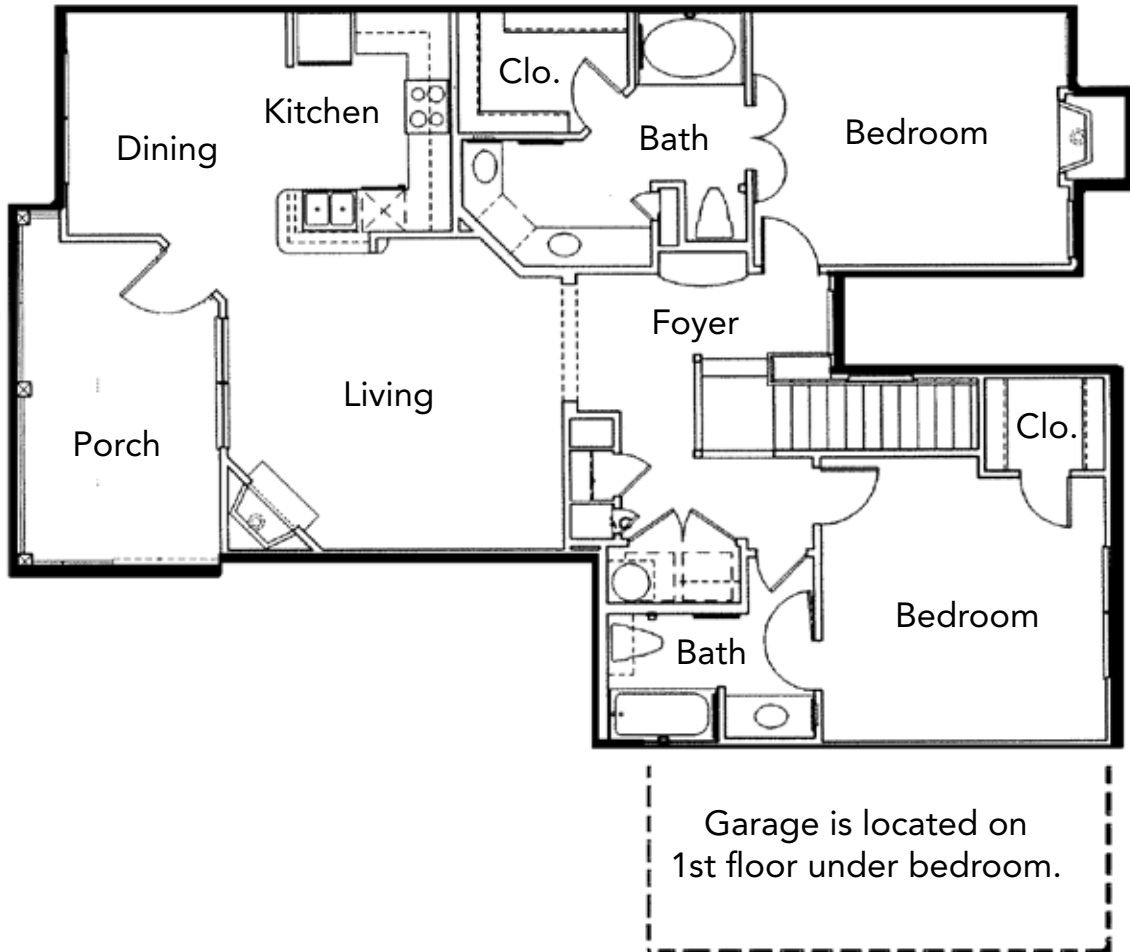




*The Woods of*  
**Cherry Creek**  
A P A R T M E N T H O M E S



**Colorado Blue Spruce**

1,320 sq.ft.

Two Bedroom, Two Bath

RENT: \_\_\_\_\_ DEPOSIT: \_\_\_\_\_

12321 Metcalf Ave  
Overland Park, KS 62213  
Phone: (913) 491-3030  
Fax: (913) 491-4710  
[www.thewoodsofcherrycreek.com](http://www.thewoodsofcherrycreek.com)