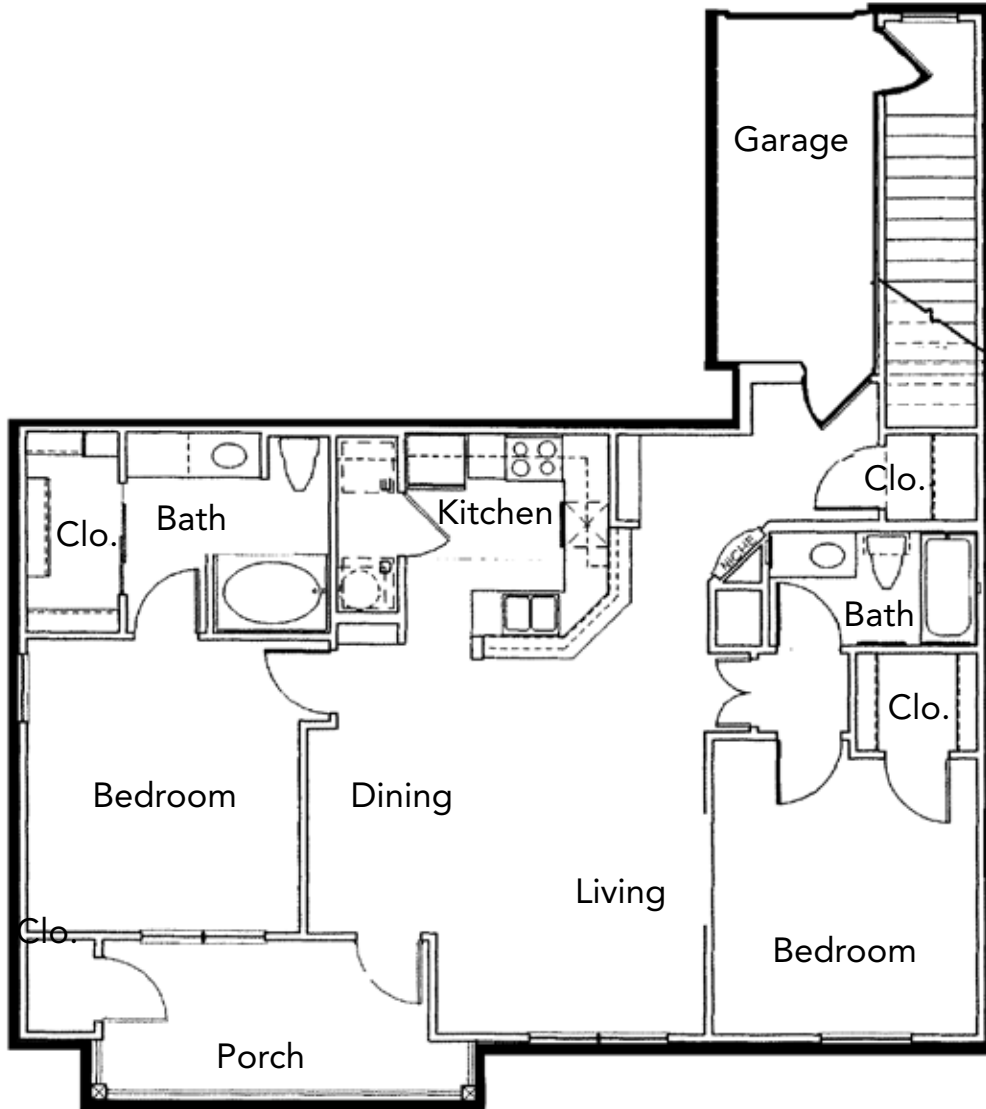




*The Woods of*  
**Cherry Creek**  
APARTMENT HOMES



**Autumn Purple Ash**

1,116 - 1,201 sq.ft.

Two Bedroom, Two Bath

RENT: \_\_\_\_\_ DEPOSIT: \_\_\_\_\_

12321 Metcalf Ave  
Overland Park, KS 62213

Phone: (913) 491-3030

Fax: (913) 491-4710

[www.thewoodsofcherrycreek.com](http://www.thewoodsofcherrycreek.com)